



HOT AIR

District 9600
Serving the Heart of Brisbane
25 October 2012

ANGELA'S ANGLE

Thank you to everyone who made the effort to come along to the Albert Park Flexi School last week. Despite some of us getting lost it was a fantastic morning. The breakfast was amazing (especially the home made muffins!!!). Talking with the students made me realise what a privileged background I have had. When you have a great family and positive supportive upbringing you take it so much for granted and presume everyone is as lucky. Hearing about the challenges that these young people have had to overcome to get an education is amazing. We met a few of the Year 12 students who were getting ready and excited for the next stage of their life whether that be at university or in the workforce. The tour of new parts of the school was informative and gladdened my heart to see our tax payments at work. All in all it was a very positive and uplifting morning. Thanks Steve for organising and to Lindsay for reminding us about how important it is to be present at this school to give them a sense of belonging to our community.

Paul, the principal spoke about the social capital that Rotary High Rise brings to the Albert Park Flexi School since they don't have a Board or Parents and Friends group as well as the huge opportunities for us to volunteer at the school in whatever capacity we are interested. They have been advised of significant funding cuts for next year so our support for this school is more important than ever.

I love the connections that Rotary brings to our community. Kym Slater, who is the Rotary Art Show curator is now working at the Albert Park Flexi School as an art teacher. It is nice how it all fits together with everyone benefiting.

ROSTER	25 October	1 November	8 November	15 November	22 November	29 November	6 December	13 December
CHAIRMAN	Russell P	Alexandra R	Susan R	Johann R	Yvonne R	Denise S	Steve S	Jane S
SET UP	Alexandra R	Susan R	Johann R	Yvonne R	Denise S	Steve S	Jane S	Craig W
	Susan R	Johann R	Yvonne R	Denise S	Steve S	Jane S	Craig W	Chris W
CLOSE DOWN	Johann R	Yvonne R	Denise S	Steve S	Jane S	Craig W	Chris W	Ken W
	Yvonne R	Denise S	Steve S	Jane S	Craig W	Chris W	Ken W	Daryl W
SERGEANT	Wendy	Lindsay	Barbara	Greg	Rob	Kit	Lindsay	Wendy

INTERNATIONAL TOAST

We toast the Rotary Club of Cork, Ireland – District 1160. Their projects include the Remembrance Tree, Pantomime, Friendship Night, Presidents Night with the 85th Anniversary Book and Youth Leadership. And for Melbourne Cup coming up we need the luck of the Irish to win that Trifecta.

GUEST SPEAKERS

25 October	Damian Price	Just My Story
1 November	Melbourne Cup Party Phil Breen's birthday (shhhh)	It's our Cup party time again – A chance for our Youth Committee to lead us in a morning of fun and frivolity

ATTENDANCE 18/10

MEMBERS -	34
VISITING -	1
ROTARIANS	
GUESTS -	
ATTENDING	53%

APOLOGIES / GUESTS and MAKEUPS

NOTIFY OUR CLUB BY 1700 TUESDAY PRIOR TO THAT WEEK'S MEETING AT:
apologies@rotarybrisbanehighrise.com
make-ups@rotarybrisbanehighrise.com

PayPal

PREPAY FOR OUR MEETINGS, EVENTS, SUBSCRIPTIONS AT:
rotarybrisbanehighrise.com
 GO TO THE MEMBERS SECTION

ROTARY GRACE

O Lord and giver of all good, we thank you for our daily food. May Rotary friends and Rotary ways help us to serve you all our days.



BOUNDARY STREET - BUY A STARTER KIT/S \$50ea

The easiest way for our Members to help Residents is to donate \$50/base starter kit. Talk to Margo B to arrange.

PUT TOGETHER A KIT YOURSELF!

If you would prefer to put a kit or kits together yourself these are the items a single resident needs to kick them off and new if possible: - **Single sheet set + Pillow case Saucepan - Towels - Tea towel - Cutlery - Crockery**

ELECTRICAL GOODS - Also starter kit donations for boarders: **toasters - jugs - irons - etc.**

PAYMENT CAN BE MADE AT THE DESK

Contact **MARGOT**

Vocational Service Month

This month is **Vocational** month. Here are some ideas you might consider. Recognise the value of all useful occupations. Contribute one's vocational talents to meeting the needs of the community be it locally or internationally. Have you presented a vocational award lately or examined the Four Way Test?

Interact's 50th Birthday World Interact Week 5-11 November



THE ROTARY CLUB OF BRISBANE HIGH-RISE PROJECTS SUPPORT
LOCAL COMMUNITY, YOUTH, INTERNATIONAL AND
EMERGENCY RESPONSES



rotary.org/en/EndPolio



rotaryyouthexchange.org.au



Albert Park Flexischool
07 3071 9010



Mamba Primary School
0418 780 663



bric
bric.org.au



shelterboxaustralia.com.au



rotaryaustralia.org.au



ROMAC
Rotary Oceania Medical
Aid for Children
romac.org.au

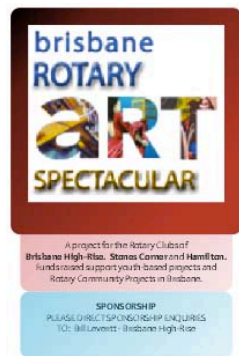


2013
NATIONAL
YOUTH
SCIENCE
FORUM
THE FUTURE NEEDS YOU
nysf.edu.au



Rotary Youth Leadership Awards

THE ROTARY CLUB OF BRISBANE HIGH-RISE EVENTS CALENDAR FOR 2012 to 2013



A project for the Rotary Clubs of
Brisbane High-Rise, Stanzas Corner and Hamilton.
We'd love to support youth based projects and
Rotary Community Projects in Brisbane.
SPONSORSHIP
PLEASE DIRECT SPONSORSHIP ENQUIRIES
TO: Bill Lambert - Brisbane High Rise



jdrf.org.au/walk



bridgetobrisbane.com.au



salvationarmy.org.au



cleanup.org.au

Events are aligned with
our purpose and are run
to raise awareness of
key issues and the role
Rotary plays in our
community as well as
raising funds.

2012/13 POSITIONS

- President** - Angela Tillmanns
- Secretary** - Rosemary Meadows
- Treasurer** - Deb Le Garde
- Program Director** - Kym McClusky
- Youth Director** - Lindsay Marshall
- Fellowship** - Barbara Leddy
- Services Director** - Margot Baillie
- Rotary Foundation** - Jennifer Eathorne
- Membership Director** - Greg Pearson
- PR Director** - Gary McDonald
- Sergeants** - Lindsay, Greg, Barbara, Wendy
- Website** - Mark Lateo, Barry Cooper
- Venue Liaison** - Ros Mumford
- Joker Draw** - Caroline Stewart

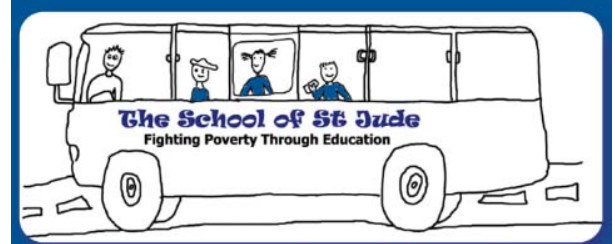
DATES TO REMEMBER

- 2013 International Assembly
13-19 January - San Diego, USA
- 2013 International Convention
23-26 June - Lisbon, Portugal
- 2013 Council on Legislation
22-26 April - Chicago, USA
- 2014 International Assembly
12-18 January - San, Diego, USA
- 2014 International Convention
01-04 June - Sydney, Australia
- CALENDAR OF ROTARY MONTHS**
- OCTOBER** - Vocational Service
- NOVEMBER** - Rotary Foundation
- DECEMBER** - Family
- JANUARY** - Rotary Awareness
- FEBRUARY** - World Understanding
- MARCH** - Literacy
- APRIL** - Magazine
- MAY** - Development
- JUNE** - Rotary Fellowship

YOUTH EXCHANGE

- 60th EEMA Conference Budapest
Hungary 7-10 September
- Rotary Youth Exchange Australia Chairs
Conference
North Sydney, New South Wales, Australia
12-14 October Contact Barry Starr to
register.
- 32nd Brazilian Youth Exchange
Meeting Florianópolis
Santa Catarina, Brazil
25-28 October
- South Central Rotary Youth Exchange
Conference Tulsa
Oklahoma, USA
18-20 January Contact
Don Peters for more information.
- 2013 North American Youth Exchange
Network Conference Orlando
Florida, USA
14-17 February

OUR VISIT TO ALBERT PARK FLEXISCHOOL – Thanks to
everyone who joined!



As I write this I'm very excited as our annual St Jude's Day is just over a week away! It is sure to be bigger and better than ever as we celebrate our 10th Anniversary with our St Jude's family. I'm looking forward to sharing all of the action with you next month. I was very honoured last week to be named by The Australian Financial Review and Westpac as one of Australia's 100 Women of Influence. I am humbled by this and know that I couldn't have achieved this without your support. Congratulations to all of the other women who were named – <http://bit.ly/T4tTOE>

In this edition I'm excited to share with you:

- Our cover story from the Standard 7 Graduation Ceremony
- Amazing summit of Mt Meru by a group of our secondary girls
- Our new Tembo bus which was painted by our students plus more!

Thank you for your ongoing support and love. Hugs, Gemma
PS – Have you seen the new presentation - www.schoolofstjude.org

LAST CHANCE TO WIN!!!



melbourne cup

WIN \$1000

trifecta

TICKETS \$2 ea

AVAILABLE THROUGH

The Rotary Club of Brisbane High-Rise CONTACT

Bill Phillips 0418780663

SUPPORTING

The Mamba School - Tanzania

Project of The Rotary Club of Brisbane High-Rise

Rotary Club of Murgon, Inc.
announces
MURGON MUSIC MUSTER

2012

WHERE: **THE PCYC COMPLEX, MURGON**
WHEN: **1st, 2nd, 3rd, and 4th NOVEMBER.**

Admission. Full week-end \$50.00

Day Rates Thursday 1st \$ 5.00

Friday 2nd \$15.00

Saturday 3rd \$25.00

Sunday 4th \$5

Camping. Powered site. \$7.50 pp/n
Unpowered site \$5.00 pp/n

For more information contact Bruce Bishop

Ph 0412 679 533

Email: bruceb45@bigpond.com

Rotary Club of Pine Rivers Daybreak Inc.

INVITATION

On behalf of District Governor **Dai Mason**, you and your partner are cordially invited to attend a celebratory function honouring

The Rotary Foundation of Rotary International, and presentations to D9600 latest **Major Donors**.

The function will be an official make-up for Rotarians

Details are as follows:-

DATE: TUESDAY 13th NOVEMBER 2012.

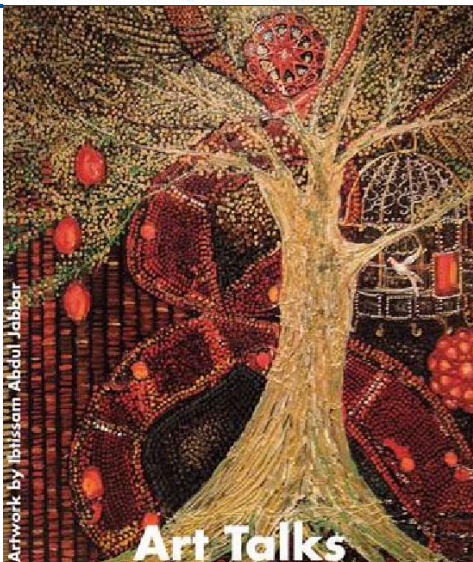
VENUE: EATONS HILL HOTEL, SOUTHPINE ROAD.

TIME: 6.30pm for 7.00pm.

COST: \$60.00 per person, including 2-course meal. Cash bar.

R.S.V.P.: BY 6th NOVEMBER 2012.

CONTACT: Rotary Club of Pine Rivers Daybreak Inc., P.O. Box 5071, Brendale Qld. 4500.



Artwork by Jabbar Abdulla

Art Talks

Creative Conversations invites you to celebrate its Inaugural exhibition, opened by **John Armstrong**, Director Harbinger Consultants and former Head of Visual Arts at QUT

Enjoy a performance by the acclaimed **Scattered People Choir**

Saturday 3 November 2012 at 2:30pm

Studio Gallery, Level 1 State Library of Queensland

Say 'hello' across cultures!

Art Talks presents the people of Brisbane a unique opportunity to experience directly the stories of refugees who've made Australia home. Enjoy personal stories through vibrant art, dynamic films and traditional costumes. Gain insights into Afghan, Persian, Iraqi, Sudanese and Congolese cultures.

Creative Conversations is partnered with the Multicultural Development Association, Romero Centre and Cleveland District State High School.

Opening hours 10am - 5pm, 3 - 11 November

The artwork is for sale.

RSVP 29 October Cindy Beumer

at creativeconversations@gmail.com t: 0488 071 525

www.facebook.com/creativeconversations

Major sponsors are:



State Library of Queensland

The Art of Hanging



ROTARY DISTRICT 9600 FOUNDATION SEMINAR

To all D9600 Club Presidents; Presidents-Elect; TRF Chairs; All interested and passionate Rotarians – especially new members.

You are invited to attend the **ROTARY FOUNDATION SEMINAR**

at **St. Columban's College, Caboolture**, on **SUNDAY 18th NOVEMBER 2012**

At 9.00am (Registration from 8.30am)

Learn about **YOUR** charity: The Rotary Foundation; The Paul Harris Society; Global and District Grants - how to apply.

Get first-hand knowledge about the Foundation programs in our District:

VTT; Peace Scholars; Scholars; PolioPlus; Fundraising.

The program will include guest speakers – hands-on workshops.

MORNING TEA WILL BE PROVIDED.

BOOKINGS ESSENTIAL for catering purposes.

For bookings, contact PDG Eric Wood, 0418789951 or ericwood@bigpond.com



2013 RI Convention
Lisbon Portugal - 23-26 June!

Lisbon is an explorer's paradise. Perched on the west coast of Europe, Portugal's capital city is a charming combination of old-world appeal and modern flair. As one of the oldest cities in Europe,

Lisbon can boast a colorful history that's been preserved in world-class museums and iconic monuments. **REGISTER NOW - Join us Online**

<http://www.rotary.org/en/Members/Events/Convention/Pages/ridefault.aspx>



CHRISTMAS PARTY

FRIDAY 7 December

SASSAFRAS - PADDINGTON

BRISBANE HIGH-RISE

BYO DRINKS

Contact: Barbara L

Lets all confirm this date with Barbara as soon as possible so we can lock in the details and the drinks!!

PHIL's THEATRE BOOKINGS !!

CONFIRM YOUR SEATS TODAY



LYRIC THEATRE - NOVEMBER 1 - 2012

\$120pp (Usually \$140-160) - 7.30pm Start

Phil has reserved 40 great stall seats stage level
The stunning **Kirstin Chávez** is Carmen, Don José -
Konstantin Andreyev, Escamillo - **José Carbó**
QSO with French Conductor –
Emmanuel Joel-Hornak,
Please email **PHIL B** for tickets

THE AGATHA CHRISTIE'S MOUSETRAP

Diamond 60th Anniversary

THE PLAYHOUSE - 5.30pm

Sunday 6 Jan 2013

Theatre Tickets \$95 - Parking \$21
ICONIC whodunit by arrangement with the
London production.

Brisbane has a 2 1/2 week season from 28
Dec 2012

We have 20 good seats

Stalls M an N – A great Xmas gift!!

Or a great family outing in the festive season
If the numbers are there we may get more
tickets.

Please email Phil B

WAR HORSE – Don't miss this



Lyric Theatre

Thu 25 July 2013 – 7.30pm

\$107 - Box office stalls prices are \$112.90

We have 60 tickets on hold!
only till 16 Nov 2012

In a preview Marie and I attended, the life
size puppets were spectacular!!

In the space of 10 minutes they became
real horses...

A compelling story of WW1 seen through
the experience of the horse.

Australia sent over 120 000 horses to WW1
– This is very much our story

Please reply by email - PHIL

MELBOURNE CUP LUNCHEON 2012

Proudly Sponsored by Novotel Brisbane Airport &
the Rotary Club of Brisbane Airport

Location: Novotel Brisbane Airport

Date: Tuesday 6th November 2012

Time: 12pm - 4pm

Cost: Buffet lunch and welcome drink
\$69 per seat (\$65 if booked in October)
\$500 for a table of 8

Activities: Lucky Door Prizes, Sweeps, Auctions,
Fashion Parade for Best Dressed

Dress Code: Race-y



RSVP: <http://airportcup.eventbrite.com>
OR CALL DEAN: 0402 262 877



BRISBANE AIRPORT



Waitangi Day Lunch

Wednesday 6 February 2013

Queensland Cricketers' Club - Main Viewing Room

Trans Tasman Rivalry

with

Sir Richard Hadlee

JOIN IN OUR SILENT AUCTION, AUCTION and RAFFLE
INCLUDING A FRAMED SIGNED CRICKET BAT FROM SIR RICHARD HADLEE

TIME 12pm - 2pm
DATE Wednesday 6 February 2013
VENUE Queensland Cricketers' Club - Main Viewing Room
411 Vulture Street East Brisbane Q 4169
qldcricketersclub.com.au

COST \$ 120 pp incl. GST Tables of 10
BOOKINGS by Wednesday 30 January 2013
PAYMENT OR UNTIL SOLD OUT
BOOKINGS Deborah LeGarde
T 0409876772

PAYMENT E secretary@rotarybrisbanehighrise.com
Credit Cards - please complete registration form and email to:
Cheques payable to The Rotary Club of Brisbane High-Rise
GPO BOX 1958 BRISBANE Q 4001

JOIN IN OUR SILENT AUCTION, AUCTION and RAFFLE
INCLUDING A FRAMED SIGNED CRICKET BAT FROM SIR RICHARD HADLEE

Supporting



BoysTown

Fresh start.
New hope.